

# Wet Brushing Technique

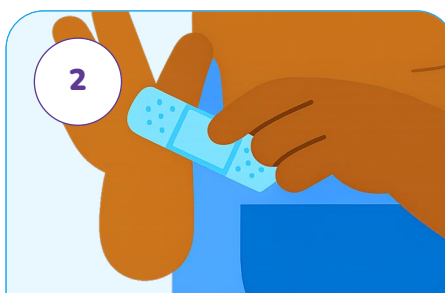


Download our app



1

**Staff wash hands** thoroughly with soap and warm water



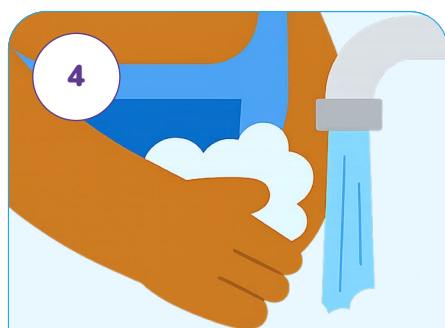
2

**Cover cuts/abrasions** with waterproof dressing (staff and children)



3

**Prepare clean surface** e.g. paper towel for toothpaste dispensing



4

**Children wash hands** before starting



5

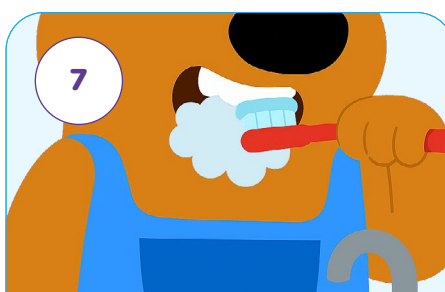
**Dispense appropriate toothpaste amounts** onto clean surface

- 0-3 years: Smear (1000ppm fluoride)
- 3+ years: Pea-sized (1350-1500ppm fluoride)



6

**Children collect individual brushes** and apply toothpaste from surface



7

**Children brush teeth** at sink for 2 minutes with supervision



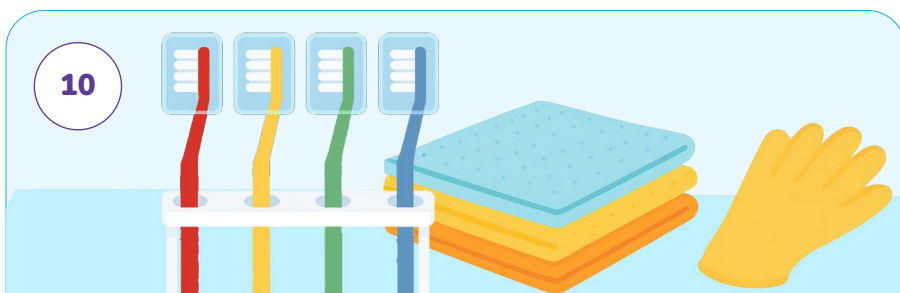
8

**Children spit into sink** (do not rinse mouth)



9

**Children rinse toothbrush** individually under running water



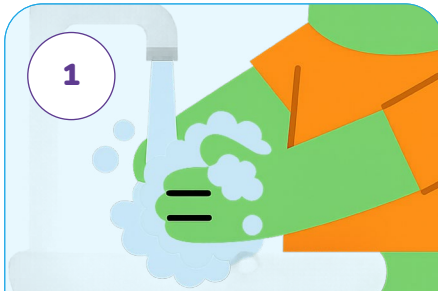
10

**Children return brushes** to individual storage slots (no touching) and **staff clean sinks/equipment** wearing household gloves

# Dry Brushing Technique

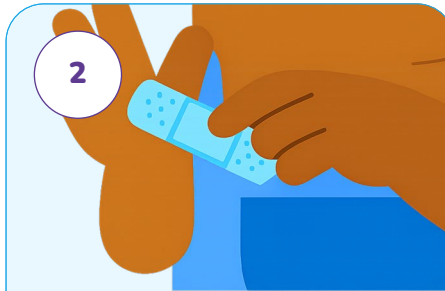


Download our app



1

**Staff wash hands** thoroughly with soap and warm water

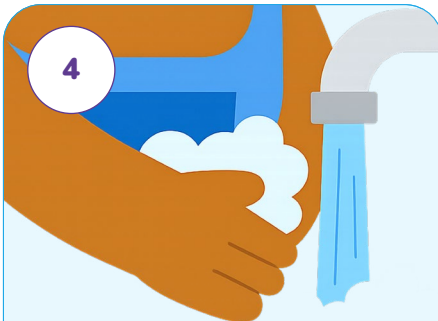


2

**Cover cuts/abrasions** with waterproof dressing (staff and children)

3

**Prepare individual tissues** for each child and clean the surface, e.g. paper towel



4

**Children wash hands** before starting



5

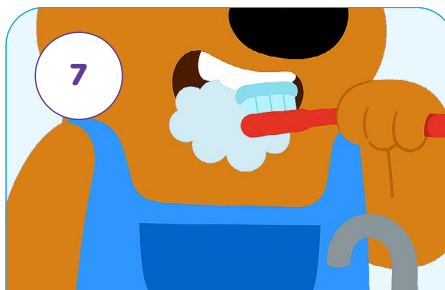
**Dispense appropriate toothpaste amounts** onto clean surface

- 0-3 years: Smear (1000ppm fluoride)
- 3+ years: Pea-sized (1350-1500ppm fluoride)



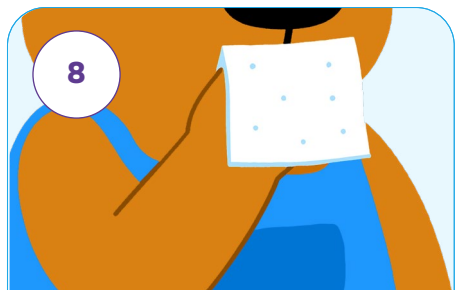
6

**Children collect brushes** and apply toothpaste from the surface



7

**Children brush teeth** (seated/standing) for 2 minutes with supervision



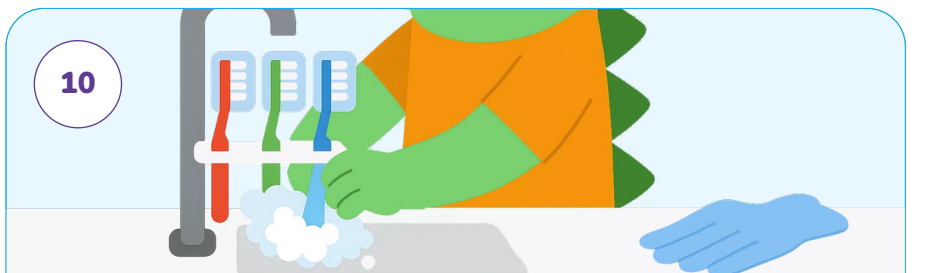
8

**Children spit into individual tissues** (do not rinse mouth)



9

**Dispose of tissues** and **children return brushes to the rack** (no touching)



10

**Teachers take the full rack to sink**, rinse brushes one by one and rack (no touching), return to storage, and **clean areas** wearing household gloves